



**MODERN SAFETY SUPPLY**



**QualityPackaging**  
SUPPLY CORPORATION

Trisha Alvara  
Account Executive  
Packaging, Safety, Janitorial Supplies

QPSCo Phone: 714-777-9800  
Fax: 714-777-9801  
[www.qualitypackaging.com](http://www.qualitypackaging.com)  
[cs@qualitypackaging.com](mailto:cs@qualitypackaging.com)

## WINTER CATALOG





## MISSION STATEMENT

Our Mission is to ensure people go home safely at the end of the day, every day. We will do this by creating innovative, comfortable and appealing PPE products that will make safety feel less of a requirement and more of a liberating freedom.

We aim to be the most trusted brand of head-to-toe PPE that delivers quality without compromise. This applies to not only our products, but also our customer service and fulfillment capabilities. We know that reliability means everything in our industry, and we aspire to be the partner our customers know they can count on no matter what.

It's all part of our **Freedom in Full Gear** promise.



**MODERN SAFETY SUPPLY**  
Safety Supplies  
[www.ModernSafety.com](http://www.ModernSafety.com)



Greenhouse tarps,  
Ground Covers, Pond Liners,  
Shade Nets  
[www.101supply.com](http://www.101supply.com)



**Janitors Warehouse**  
Janitorial Supplies  
[www.JanitorsWarehouse.net](http://www.JanitorsWarehouse.net)



**All Coast Packaging Corporation**  
Agricultural Packaging  
[www.AllCoastPackaging.com](http://www.AllCoastPackaging.com)

## OUR SERVICES



### BRANDED PPE

Drive brand awareness with custom logos and safety reminders printed on your PPE. Available in silk screening for a vibrant, eye-catching design or pad printing for printing on products like hard hats or ear muffs.



### PRIVATE LABELING & CUSTOM PACKING

Give your packaged products a professional, customized look. This service provides low cost, retail ready, or banding multipacks that can be store ready directly from the product cases.



### VEND PACK READY

Provide your customers with vending machine pack ready items. It's a versatile solution that offers convenient packages to accommodate small or large business merchandise.



### DIRECT IMPORT PROGRAMS (DIP)

Increase buying power without compromising quality control with a personalized direct import program. The DIP is designed specifically for high-volume distributors looking for cost savings.



### SERVICE HANG TAGS

Add value to your packaging. Choose from two hang tag style types printed with customized retail markings, including UPC barcoding, product item number, and description call outs.



### DROP SHIPMENTS

Save time and money with drop shipment services that handle your orders with care and attentiveness. It's a flexible, low investment strategy that offers scalability for your growing business.

# TABLE OF CONTENTS



## HAND PROTECTION

<b>FroGrip®</b>   Cut Resistant Gloves	04
<b>Daybreaker®</b>   Impact Resistant Gloves	06
Leather Gloves	06
Textile Gloves	09



## HI-VIS APPAREL

<b>HiVizGard™</b>   Safety Vests   Sweatshirts   Jackets   Pants	10
--	----



## PROTECTIVE APPAREL

<b>DuraWear™</b>   Protective Rainwear	12
<b>DuraWear™</b>   Chest Wader	14



## HEAD & FOOT PROTECTION

<b>DuraWear™</b>   Head & Foot Protection	14
---	----





## BEST SELLER



BLACK PVC COATED

**ARCTIC-Z™**

**F4923**

**Sizes:** S-2XL

- 15 gauge outer forest green engineered yarn shell
- 7 gauge inner black thermal lining
- Black foam PVC  $\frac{3}{4}$  back coated on palm, fingers and full thumb
- Actifresh™ or sanitized treated

### APPLICATIONS

Refrigerated Areas | Utilities | Food Processing



**WARNING:** Cancer - [www.P65Warnings.ca.gov](http://www.P65Warnings.ca.gov)



ABRASION = 4  
CUT = 5  
TEAR = 4  
PUNCTURE = 2



CONVECTIVE = X  
CONTACT = 2  
PERMEABILITY = X



BLACK SANDY LATEX COATED

**ARCTIC TUFF™**

**F4783HV**

**Sizes:** S-2XL

- 13 gauge outer hi-vis green polyester shell
- 10 gauge inner hi-vis green thermal lining
- Fully orange latex coated with double-dipped black sandy latex on palm, fingers and full thumb

### APPLICATIONS

Refrigerated Areas | Construction | Manufacturing | Warehouse



ABRASION = 2  
CUT = 2  
TEAR = 3  
PUNCTURE = 2



CONVECTIVE = X  
CONTACT = 2  
PERMEABILITY = X



FULLY BLUE LATEX COATED

**ARCTIC Z™**

**F4922**

**Sizes:** M-2XL

- 13 gauge outer blue engineered yarn shell
- 10 gauge inner gray thermal lining
- Fully blue latex coated with double-dipped black sandy latex on palm, fingers and full thumb

### APPLICATIONS

Refrigerated Areas | Food Processing | Commercial Fishing



ABRASION = 3  
CUT = X  
TEAR = 4  
PUNCTURE = 3



CONVECTIVE = 1  
CONTACT = 1  
PERMEABILITY = 1



BLACK SANDY NITRILE COATED

**ARCTIC TUFF™**

**F4784LG**

**Sizes:** M-2XL

- 13 gauge outer hi-vis green polyester shell
- 10 gauge inner hi-vis green thermal lining
- Fully blue nitrile coated with double-dipped black sandy nitrile coated on palm, fingers and full thumb

### APPLICATIONS

Refrigerated Areas | Construction | Manufacturing



ABRASION = 4  
CUT = 2  
TEAR = 4  
PUNCTURE = 2



CONVECTIVE = X  
CONTACT = 2  
PERMEABILITY = X



**BLACK LATEX COATED**  
**ARCTIC TUFF™**

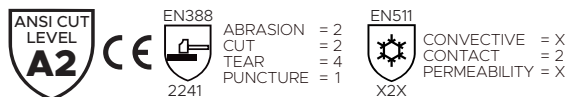
**4789HO**

**Sizes:** S-2XL

- 7 gauge orange acrylic thermal shell
- Black latex coated on palm, fingers and full thumb

**APPLICATIONS**

Refrigerated Areas | Construction | Manufacturing | Warehouse



**BLACK FOAM LATEX COATED**  
**ARCTIC TUFF™**

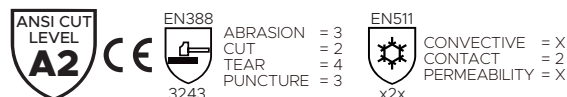
**F4789HO**

**Sizes:** S-2XL

- 7 gauge orange acrylic thermal shell
- Black foam latex coated on palm, fingers and full thumb

**APPLICATIONS**

Refrigerated Areas | Construction | Warehouse



**BLUE LATEX COATED**  
**ARCTIC TUFF™**

**4789LG**

**Sizes:** S-2XL

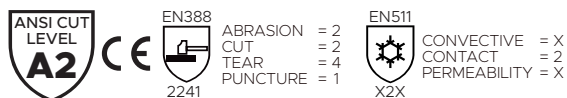
- 7 gauge hi-vis green acrylic thermal shell
- Blue latex coated on palm, fingers and full thumb

**RELATED**

**4789BL:** 7 gauge blue acrylic, Sizes: S-2XL

**APPLICATIONS**

Refrigerated Areas | Construction | Manufacturing | Warehouse



**BLACK FOAM LATEX COATED**  
**ARCTIC TUFF™**

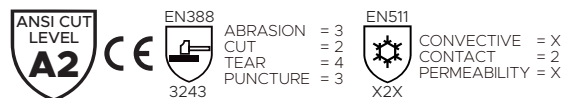
**F4789LG**

**Sizes:** S-2XL

- 7 gauge hi-vis green acrylic thermal shell
- Black foam latex coated on palm, fingers and full thumb

**APPLICATIONS**

Refrigerated Areas | Construction | Warehouse





## BEST SELLER



### GOATSKIN LEATHER **INTEGRATOR II™**

**0965**

**Sizes:** M-2XL

- Premium grain goatskin
- Shirred elastic back
- Keystone thumb
- TPR at back of hand and fingers

#### APPLICATIONS

Construction | Machine Operations | Utility Work



**WARNING:** Cancer & Reproductive Harm - [www.P65Warnings.ca.gov](http://www.P65Warnings.ca.gov)



### 3M™ THINSULATE™ LINED SYNTHETIC LEATHER **STRIKER V™**

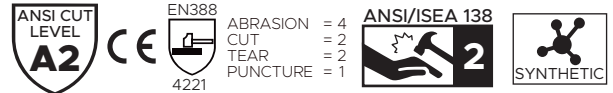
**0950**

**Sizes:** S-2XL

- Hi-vis green nylon spandex shell
- Synthetic leather non-slip padded palm and fingertips
- TPR at back of hand and fingers
- Reinforced thumb crotch

#### APPLICATIONS

Construction | Machine Operations | Utility Work



**WARNING:** Cancer & Reproductive Harm - [www.P65Warnings.ca.gov](http://www.P65Warnings.ca.gov)



### 3M™ THINSULATE™ LINED HI-VIS GREEN POLY CORD **XSCEPTER®**

**0958**

**Sizes:** M-2XL

- Hi-vis green nylon and spandex shell with poly cord palm
- TPR at back of hand and fingers
- Reinforced PVC thumb crotch

#### APPLICATIONS

Construction | Material Handling | Oil | Petrochemical



**WARNING:** Cancer & Reproductive Harm - [www.P65Warnings.ca.gov](http://www.P65Warnings.ca.gov)



### CUT RESISTANT LEATHER DRIVER WITH COLOR CODED FABRIC HEMMED CUFF **INTEGRATOR™**

**6897**

**Sizes:** M-2XL

- Para aramid lining
- Shirred elastic back
- Keystone thumb

#### APPLICATIONS

Construction | Machine Operation | Utility Work



**WARNING:** Cancer & Reproductive Harm - [www.P65Warnings.ca.gov](http://www.P65Warnings.ca.gov)



## 3M™ THINSULATE™ LINED LEATHER DRIVER WITH ROLLED CUFF

**6518**

**Sizes:** S-2XL

- Shirred elastic back
- Keystone thumb

### RELATED

**6217:** Premium grain, fleece lined, color coded fabric hemmed cuff, Sizes: S-2XL

**6317:** Premium grain, pile lined, color coded fabric hemmed cuff, Sizes: S-2XL

### APPLICATIONS

Agriculture | Masonry | Mining | Transportation



**PREMIUM  
GRAIN**

**WARNING:** Cancer & Reproductive Harm - [www.P65Warnings.ca.gov](http://www.P65Warnings.ca.gov)



## 3M™ THINSULATE™ LINED LEATHER DRIVER WITH ROLLED CUFF

**6958**

**Sizes:** XS-2XL

- Shirred elastic back
- Keystone thumb

### RELATED

**6958BK:** Black leather, Sizes: XS-2XL

### APPLICATIONS

Construction | Machine Operation | Utility Work



**PREMIUM  
GRAIN**

**WARNING:** Cancer & Reproductive Harm - [www.P65Warnings.ca.gov](http://www.P65Warnings.ca.gov)



## 3M™ THINSULATE™ LINED LEATHER DRIVER WITH ROLLED CUFF

**7507**

**Sizes:** S-2XL

- Shirred for elastic back
- Keystone thumb

### RELATED

**7217:** Standard grain, red fleece lined, color coded fabric hemmed cuff, Sizes: S-2XL

### APPLICATIONS

Carpentry | Construction | Heavy Equipment Operator



**PREMIUM  
GRAIN**

**WARNING:** Cancer & Reproductive Harm - [www.P65Warnings.ca.gov](http://www.P65Warnings.ca.gov)



## WHITE FLEECE LINED LEATHER DRIVER WITH COLOR CODED FABRIC HEMMED CUFF

**6837**

**Sizes:** XS-2XL

- Shirred elastic back
- Keystone thumb

### RELATED

**6857:** Premium grain, color coded fabric hemmed cuff, Sizes: S-2XL

### APPLICATIONS

Carpentry | Foundry | Masonry | Mining



**PREMIUM  
GRAIN**

**WARNING:** Cancer & Reproductive Harm - [www.P65Warnings.ca.gov](http://www.P65Warnings.ca.gov)



## BEST SELLER



**WATERPROOF THERMAL LINED LEATHER PALM  
WITH 2 1/2" RUBBERIZED SAFETY CUFF**

**3656**

**Sizes:** L-2XL

- Knuckle strap
- Yellow heavy canvas back
- Gunn pattern

### APPLICATIONS

Construction | Material Handling | General Maintenance



**PREMIUM  
SELECT  
SHOULDER**

**WARNING:** Cancer & Reproductive Harm - [www.P65Warnings.ca.gov](http://www.P65Warnings.ca.gov)



**RED JERSEY FOAM LINED LEATHER PALM AND  
WITH 2 1/2" RUBBERIZED SAFETY CUFF**

**3650**

**Sizes:** MENS

- Knuckle strap
- Gunn pattern

### APPLICATIONS

Carpentry | Foundry | Masonry | Mining



**PREMIUM  
SELECT  
SHOULDER**

**WARNING:** Cancer & Reproductive Harm - [www.P65Warnings.ca.gov](http://www.P65Warnings.ca.gov)



**PILE LINED LEATHER PALM WITH 2 1/2" RUBBERIZED  
SAFETY CUFF**

**3655**

**Sizes:** L-2XL

- Knuckle strap
- Yellow heavy canvas back
- Gunn pattern
- Wing thumb

### APPLICATIONS

Construction | Material Handling | General Maintenance



**PREMIUM  
SELECT  
SHOULDER**

**WARNING:** Cancer & Reproductive Harm - [www.P65Warnings.ca.gov](http://www.P65Warnings.ca.gov)



**PILE LINED LEATHER DRIVER WITH ROLLED CUFF**

**8354**

**Sizes:** S-2XL

- Shirred elastic back
- Keystone thumb

### RELATED

**8454:** Red fleece lined, Sizes: S-2XL

### APPLICATIONS

Construction | Farming | Light Duty Welding | Machine Operations



**SELECT  
SHOULDER  
SPLIT**

**WARNING:** Cancer & Reproductive Harm - [www.P65Warnings.ca.gov](http://www.P65Warnings.ca.gov)

**9 OZ. BROWN JERSEY****4503****Sizes:** MENS & LADIES

- Regular weight
- Clute pattern
- Knit wrist

**RELATED****4503A:** 10 oz., Sizes: MENS**4503PSP:** Polyester/Cotton, Sizes: MENS**4503Q:** Regular weight, Sizes: MENS & LADIES**APPLICATIONS**

General Maintenance | Parts Handling | Packaging | Warehouse

**HEAVY WEIGHT GOLDEN CHORE WITH KNIT WRIST****4203****Sizes:** MENS

- Straight thumb
- Clute pattern
- Two-layer fleece quilted palm and back

**RELATED****4206:** Green chore, Heavy weight, Sizes: MENS**APPLICATIONS**

Plant Manufacture | Maintenance

**LINED BROWN JERSEY****4308Q****Sizes:** MENS

- Slip-on
- Red fleece lined
- Gunn pattern
- Straight thumb

**APPLICATIONS**

General Maintenance | Parts Handling | Packaging | Warehouse

**PREMIUM 20 OZ. COTTON/POLYESTER CORDUROY  
DOUBLE PALM****4518CRFL****Sizes:** MENS

- Fully lined
- Straight thumb
- Nap-In double palm
- Clute pattern
- Knit wrist

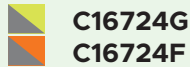
**APPLICATIONS**

Oil and Gas | Refineries | Warehouse



## BEST SELLER

### HI-VIS GREEN WITH REFLECTIVE STRIPES SWEATSHIRT



**C16724G**

**C16724F**

**Sizes:** M-3XL

- 100% polyester fleece
- Front zipper closure
- 2" silver reflective tape
- Elastic ribbed cuff and waistband
- Hood with adjustable pull cord
- Two external pockets



#### APPLICATIONS

Construction | Maintenance | Transportation



**WARNING:** Does not contain intentionally added PFAS

### HI-VIS GREEN WITH REFLECTIVE STRIPES SWEATSHIRT



**C16734GB**

**Sizes:** M-4XL

- 100% polyester fleece
- Front zipper closure
- 2" silver reflective tape
- Elastic ribbed cuff and waistband
- Hood with adjustable pull cord
- Two external pockets



#### APPLICATIONS

Construction | Maintenance | Transportation



BLACK  
BOTTOM

**WARNING:** Does not contain intentionally added PFAS

### WATER RESISTANT HI-VIS GREEN WINDBREAKER



**C16720G**

**Sizes:** S-7XL

- Polyester-oxford fabric with PU coating
- Zipper with storm flap
- 2" silver reflective tape
- Detachable hood
- Adjustable wrist straps
- Three external pockets
- Polyester mesh lining



#### APPLICATIONS

Emergency Responders | Roadwork



**WARNING:** Does not contain intentionally added PFAS

### HI-VIS GREEN WITH REFLECTIVE STRIPES PARKA JACKET



**C16727GB**

**Sizes:** XL-2XL

- Fully insulated fleece liner and collar
- Detachable hood
- 2" silver reflective tape
- Zipper front closure
- Elastic cuffs
- Three external pockets



#### APPLICATIONS

Construction | Maintenance | Transportation



BLACK  
BOTTOM

**WARNING:** Does not contain intentionally added PFAS

# BEST SELLER

## HI-VIS GREEN BOMBER WITH REFLECTIVE STRIPES JACKET

**C16722G**

Sizes: M-5XL

- Waterproof PU coated polyester shell and quilted liner
- Front zipper closure
- 2" wide reflective tape
- Detached hood with adjustable pull cords
- Pen pocket on sleeve
- Three external pockets and one internal pocket



### APPLICATIONS

Emergency Responders | Roadwork | Survey and Utility

CLASS  
**3**

**WARNING:** Does not contain intentionally added PFAS

## HI-VIS GREEN WITH REFLECTIVE STRIPES BOMBER JACKET

**C16725G**

**C16725F**

Sizes: M-5XL

- Waterproof PU coated polyester shell and quilted liner
- Front zipper closure
- 2" wide reflective tape
- Dual mic tabs
- Detached hood with adjustable pull cords
- Pen pocket on sleeve
- Three external pockets and one internal pocket



### APPLICATIONS

Construction | Maintenance | Transportation

CLASS  
**3**

BLACK  
BOTTOM

**WARNING:** Does not contain intentionally added PFAS

## HI-VIS GREEN SOFT SHELL WITH REFLECTIVE STRIPES SOFT SHELL JACKET

**C16728GBX**

Sizes: M-5XL

- Weatherproof outer contour softshell
- Front zipper closure
- 2" silver reflective tape
- Fully insulated fleece liner and collar
- Dual mic tabs on shoulders
- Adjustable cuffs with rubber pulls tabs
- Three external pockets



### APPLICATIONS

Emergency Responders | Roadwork | Survey and Utility

CLASS  
**3**

BLACK  
BOTTOM

**WARNING:** Does not contain intentionally added PFAS

## HI-VIS GREEN INSULATED RAIN PANTS

**C16921G**

Sizes: M-6XL

- Waterproof PU coated polyester shell and quilted liner
- 2" silver reflective tape
- Elastic waist and drawstring
- Adjustable ankle straps
- Two pass through pockets



### RELATED

**C16920G:** Hi-Vis Green, non-insulated, Sizes: S-7XL

### APPLICATIONS

Construction | Roadwork | Survey and Utility

CLASS  
**E**

**WARNING:** Does not contain intentionally added PFAS

HAND PROTECTION

HI-VIS APPAREL

PROTECTIVE APPAREL

HEAD & FOOT PROTECTION



## BEST SELLER

### POLYESTER/OXFORD WITH PU COATING 3-PIECE RAINSUIT

**1350**

**Sizes:** S-5XL

**Thickness:** 0.15mm

- Waterproof jacket with detachable hood and bib overall pants
- Corduroy collar jacket
- Front storm-fly with snaps closure
- Two front pockets with snap closures

#### RELATED

**1352:** Jacket, Sizes: M-3XL

**1353:** Bib pants, Size: M-3XL



CLASS  
**3**

#### APPLICATIONS

Shipyards | Environmental Cleanup | Maintenance | Construction

**WARNING:** Cancer & Reproductive Harm - [www.P65Warnings.ca.gov](http://www.P65Warnings.ca.gov)

**WARNING:** Does not contain intentionally added PFAS



### 2 LAYERS PVC/POLYESTER

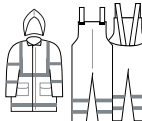
### 3-PIECE HI-VIS GREEN RAINSUIT WITH REFLECTIVE STRIPES

**1260HIVIZ**

**Sizes:** S-5XL

**Thickness:** 0.35mm

- Jacket with detachable hood, corduroy collar, and bib overall pants
- 2" wide reflective stripes
- Cape vented back and underarm air vents
- Front zipper with storm-fly front snaps
- Heavy PVC reinforced joints



#### APPLICATIONS

Environmental Clean-Up | Maintenance Public Works

**WARNING:** Cancer & Reproductive Harm - [www.P65Warnings.ca.gov](http://www.P65Warnings.ca.gov)

**WARNING:** Does not contain intentionally added PFAS



### POLYESTER/OXFORD WITH PU COATING RAINCOAT

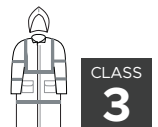
**1355**

**Sizes:** S-3XL

**Thickness:** 0.15mm

**Length:** 48"

- Waterproof raincoat with detachable hideaway hood
- Front zipper with snaps closure
- Two front pockets with snaps



CLASS  
**3**

#### APPLICATIONS

Construction | Environmental Cleanup | Maintenance | Shipyards

**WARNING:** Cancer & Reproductive Harm - [www.P65Warnings.ca.gov](http://www.P65Warnings.ca.gov)

**WARNING:** Does not contain intentionally added PFAS



### 3 LAYERS PVC/NYLON/PVC

### 2-PIECE ACID SUIT

**1370**

**Sizes:** S-5XL

**Thickness:** 0.40mm

- Waterproof jacket with attached hood and bib overall pants
- Cape-vented back and underarm air vents
- Front snaps closure with storm-fly
- Heavy PVC reinforced joints



#### APPLICATIONS

Petrochemical | Oil Refining | Maintenance

**WARNING:** Cancer & Reproductive Harm - [www.P65Warnings.ca.gov](http://www.P65Warnings.ca.gov)

**WARNING:** Does not contain intentionally added PFAS



## 2 LAYERS PVC/POLYESTER

### YELLOW RAIN JACKET

1222

Sizes: S-5XL

Thickness: 0.35mm

- Waterproof jacket with detachable hood
- Corduroy collar jacket
- Cape-vented back and underarm air vents
- Storm-fly front with zipper and snaps closure
- Two flap pockets
- Heavy PVC reinforced joints



#### APPLICATIONS

Construction | Environmental Clean-Up | Maintenance | Shipyard

**WARNING:** Cancer & Reproductive Harm - [www.P65Warnings.ca.gov](http://www.P65Warnings.ca.gov)

**WARNING:** Does not contain intentionally added PFAS

## 2 LAYERS PVC/POLYESTER

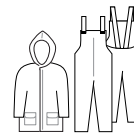
### 3-PIECE YELLOW RAINSUIT

1220

Sizes: S-7XL

Thickness: 0.35mm

- Waterproof jacket with detachable hood and bib overall pants
- Corduroy collar jacket
- Cape-vented back and underarm air vents
- Storm-fly front with zipper and snaps closure
- Two flap pockets
- Heavy PVC reinforced joints



#### APPLICATIONS

Construction | Environmental Clean-Up | Maintenance | Shipyard

**WARNING:** Cancer & Reproductive Harm - [www.P65Warnings.ca.gov](http://www.P65Warnings.ca.gov)

**WARNING:** Does not contain intentionally added PFAS

## 2 LAYERS PVC/POLYESTER

### YELLOW BIB PANTS

1223

Sizes: S-4XL

Thickness: 0.35mm

- Waterproof bib overall pants
- Front fly opening with snap
- Adjustable suspender clips and ankle snaps
- Heavy PVC reinforced joints



#### APPLICATIONS

Construction | Environmental Clean-Up | Maintenance | Shipyard

**WARNING:** Cancer & Reproductive Harm - [www.P65Warnings.ca.gov](http://www.P65Warnings.ca.gov)

**WARNING:** Does not contain intentionally added PFAS

## 2 LAYERS PVC/POLYESTER

### 2-PIECE YELLOW SLICKER

1228

Sizes: S-3XL

Thickness: 0.35mm

Length: 60"

- Waterproof slicker
- Detachable hood
- Storm-fly front with snaps closure
- Two flap pockets



#### APPLICATIONS

Construction | Environmental Clean-Up Maintenance | Shipyard

**WARNING:** Cancer & Reproductive Harm - [www.P65Warnings.ca.gov](http://www.P65Warnings.ca.gov)

**WARNING:** Does not contain intentionally added PFAS



## BEST SELLER



### NEOPRENE CHEST WADER

**1532**

**Sizes:** 7-15

- 4.5mm neoprene and knit jersey lined
- Attached rubber boots
- Bar-tread outsole and cushioned insole
- Over-the-sock style
- Steel shank and safety toe

#### APPLICATIONS

Environmental Cleanup | Agriculture | Utilities | Transportation | Maintenance

ASTM  
**F2413-18**

**WARNING:** Cancer & Reproductive Harm - [www.P65Warnings.ca.gov](http://www.P65Warnings.ca.gov)

### FULL BRIM STYLE HARD HAT

**1416R**

- Shell constructed from high density polyethylene
- Low profile design with pillow brow pad and top ribbon pad for comfort
- Full brim style available in 6-point ratchet suspensions



#### APPLICATIONS

Construction | Demolition | Mining | Oil Rigs

ANSI <b>Z89.1</b>	CLASS <b>C</b>	CLASS <b>E</b>	CLASS <b>G</b>	TYPE <b>1</b>	ONE SIZE
----------------------	-------------------	-------------------	-------------------	------------------	-------------

### 17" YELLOW SLUSH RUBBER BOOTS

**1510:** Yellow

**Sizes:** 6-18

- Fabric-lined
- Bar tread outsole
- Over-the-shoe style



#### APPLICATIONS

Maintenance | Roadwork | Utilities

**WARNING:** Cancer & Reproductive Harm - [www.P65Warnings.ca.gov](http://www.P65Warnings.ca.gov)

## 16" BLACK STEEL TOE PVC BOOTS

■ 1551

Sizes: 5-15

- Unlined
- One piece injection mold
- Bar cleat outsole
- Over-the-sock style



### APPLICATIONS

Construction | Environmental Clean-Up | Roadwork

⚠ **WARNING:** Cancer & Reproductive Harm - [www.P65Warnings.ca.gov](http://www.P65Warnings.ca.gov)

## 16" BLACK RUBBER BOOTS

■ 1500: plain toe

■ 1501: steel toe

Sizes: 6-15

- Fabric lined
- Steel shank
- Bar-tread outsole
- Over-the-sock style



### APPLICATIONS

Construction | Environmental Clean-Up | Maintenance

⚠ **WARNING:** Cancer & Reproductive Harm - [www.P65Warnings.ca.gov](http://www.P65Warnings.ca.gov)

## 5-BUCKLE BLACK RUBBER BOOTS

■ 1520

Sizes: 6-16

- Fabric lined
- Bar-tread outsole
- Over-the-shoe style



### APPLICATIONS

Construction | Environmental Clean-Up | Maintenance

⚠ **WARNING:** Cancer & Reproductive Harm - [www.P65Warnings.ca.gov](http://www.P65Warnings.ca.gov)

## 32.5" TALL BLACK HIP WADER BOOTS

■ 1531

Sizes: 6-16

- Steel safety toe with belt loop strap and buckle adjustment
- Fabric lined
- Steel shank with cushion insole
- Reinforced knee & front
- Bar-tread outsole
- Over-the-sock style



### APPLICATIONS

Agriculture | Forestry | Public Works

⚠ **WARNING:** Cancer & Reproductive Harm - [www.P65Warnings.ca.gov](http://www.P65Warnings.ca.gov)



**Quality Packaging**  
SUPPLY CORPORATION



**MODERN SAFETY SUPPLY**  
Safety Supplies  
[www.ModernSafety.com](http://www.ModernSafety.com)



Greenhouse tarps,  
Ground Covers, Pond Liners,  
Shade Nets  
[www.101supply.com](http://www.101supply.com)



**Janitors Warehouse**  
Janitorial Supplies  
[www.JanitorsWarehouse.net](http://www.JanitorsWarehouse.net)



**All Coast Packaging**  
Corporation  
Agricultural Packaging  
[www.AllCoastPackaging.com](http://www.AllCoastPackaging.com)

QPSCo Phone: 714·777·9800  
Fax: 714·777·9801  
[www.qualitypackaging.com](http://www.qualitypackaging.com)  
[cs@qualitypackaging.com](mailto:cs@qualitypackaging.com)

**MODERN SAFETY SUPPLY** [www.ModernSafety.com](http://www.ModernSafety.com) 714-771-4677